

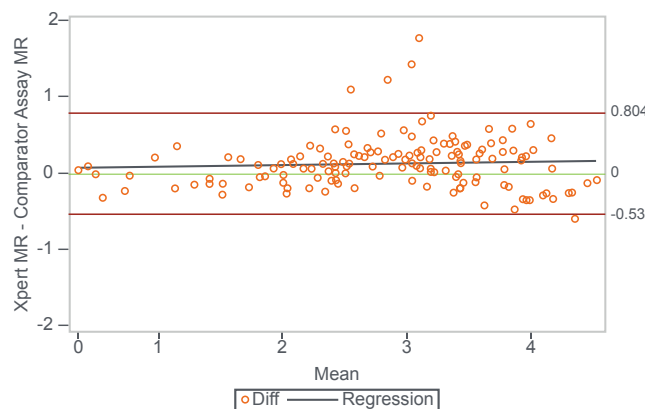
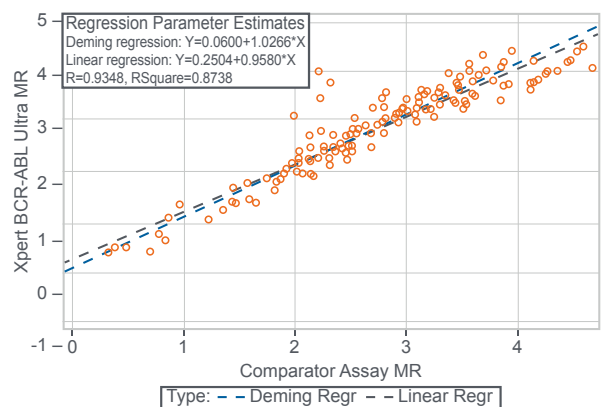
Comparison of Asuragen & Cepheid BCR-ABL Testing

YOUR CHOICE OF BCR-ABL ASSAY MATTERS Choose the best assay on market

Upgrade with confidence

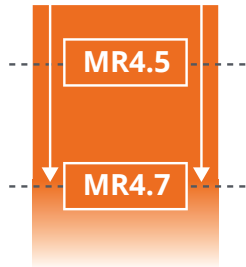
QuantideX® qPCR BCR-ABL IS Kit* is the first FDA-cleared diagnostic kit for use in chronic myeloid leukemia management. Cepheid's method comparison for FDA clearance compared their assay against the QuantideX qPCR BCR-ABL IS Kit (n=147).¹ The high correlation and minimal bias found between methods mean that you can switch your existing patients without fear of changing reportable values.

Comparator Assay is FDA-cleared QuantideX qPCR BCR-ABL IS Kit. Graphs of comparison performance are from US FDA 501(k) Substantial Equivalence Determination Decision Summary for Xpert BCR-ABL Ultra (K190076)



Comparison of Asuragen and Cepheid BCR-ABL Testing

	QuantideX® qPCR BCR-ABL IS*	Xpert BCR-ABL Ultra
Deep sensitivity of MR4.7	YES	No
Multiple IS calibrators with on-site calibration	YES	No
Backed by clinical outcomes trial	YES ²	No
Scalable batch workflow	YES	No

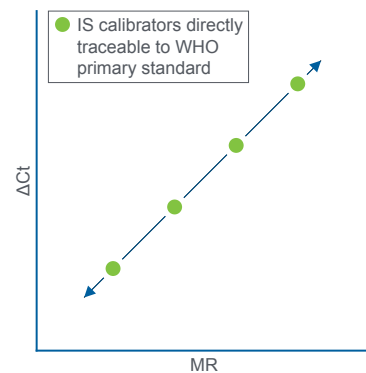


More reportable values with deeply sensitive results

QuantideX qPCR BCR-ABL IS Kit has the deepest sensitivity at MR4.7, ensuring you're able to report deeper MR values for results.

Ensure testing performs as expected in your lab

Multiple IS calibrators with on-site calibration ensure results are reliable in your specific lab.



Four IS calibrators allow for accurate detection across the quantitative range



Batch workflow enables scalability

Due to advances in TKI therapy for CML, patients are living longer.⁴ Also, since attempting treatment-free remission requires more frequent monitoring,⁵ scalable testing may be important for your lab going forward.

Empowering confidence in results

The QuantideX qPCR BCR-ABL IS Kit is rigorously validated for CML monitoring, with clinical outcomes trial data, to ensure you can have confidence in your reported results.^{2,3}

*For *in vitro* diagnostic use.

1. US FDA 501(k) Substantial Equivalence Determination Decision Summary for Xpert BCR-ABL Ultra (K190076)
2. US FDA Evaluation of Automatic Class II Designation for QuantideX qPCR BCR-ABL IS Decision Summary (DEN160003)
3. Brown JT, et al. JMD. 2019; 21(4): 718-733
4. Huang X, et al. Cancer. 2012; 118(12), 3123-3127
5. NCCN Guidelines for Chronic Myeloid Leukemia. v3.2022

For more information visit www.asuragen.com



Asuragen, Inc.
2150 Woodward Street, Suite 100
Austin TX 78744
www.asuragen.com

3000-082
Rev A 08/20

Distributed by Abacus dx

1800 ABACUS (AUS) 0800 222 170 (NZ) | info@abacusdx.com | www.abacusdx.com

abacus dx